

STATE DATES - 2020

OCTOBER

- 3 – MAR Conference Webinar
- 6 – NJSFWC Executive Committee
- 13 – NJSFWC State Board
- 19 – NJSFWC STATE FALL CONFERENCE WEBINAR

NOVEMBER

- 3 – NJSFWC Executive Committee
- 10 – NJSFWC State Board
- 16 – NJSFWC Day, 126th Anniversary

Important Deadline Dates (2020) for Club Presidents

OCTOBER

- 15 - NJSFWC Bylaw Amendments
Due to Vivien S. Finn, Bylaws Chairman
- 18 – NJSFWC State Fall Conference Webinar
Registration Form Due to Headquarters
- 30 – Charitable Registration Form
Due to Headquarters

NOVEMBER

- 1 – Federation Dues Payable to NJSFWC
Headquarters
- 15 – Women of Achievement Nomination Form
Due to NJSFWC Headquarters

THE NJSFWC STATE YEARBOOK

Has your club ordered a copy?

Highlights: Information can be found on:

**State Officers, Club Presidents (WC and Juniorettes)
Affiliate Clubs, State Organizations, Members-at-Large
Community Service Program Supplements – District Chairmen
Convention Reports - Calendar of State / District Events
Past State Presidents, Past Directors of Junior Clubs, Past EMD Chairmen
Explanation of Contributions - Charter Clubs
Bylaws and Standing Rules for WC**

Cost: \$30.00 (if picked up) - \$35.00 (if mailed)

August, 2020

Re: Women's Club Liability Insurance

As you are aware the insurance carrier for the NJ State Federation of Women's Clubs, permits its agent RLM Agency Inc. to add an affiliated club without a clubhouse to the liability portion of the Federation's policy as an additional insured. This allows clubs to purchase a higher amount of insurance protection for a relatively low premium. Presently, the policy offers \$1 million Combined Single Limit coverage with an additional \$1 million umbrella policy for about \$182.00 Annually.

Participation in the NJ Federations policy provides clubs endorsements and Certificates of Insurance for standard special events to be added without additional charge a when required by those facilities. Clubs are protected, not only at regular meeting places, but also where they hold small special events and fundraisers. There will be an extra charge for larger events with more people. Events that include liquor of any kind are not covered under this policy, unless events are BYOB. Following is a breakdown of additional charges:

Up to 100 attendees - No charge
Up to 200 attendees - \$50 charge
Up to 300 attendees -\$75 charge

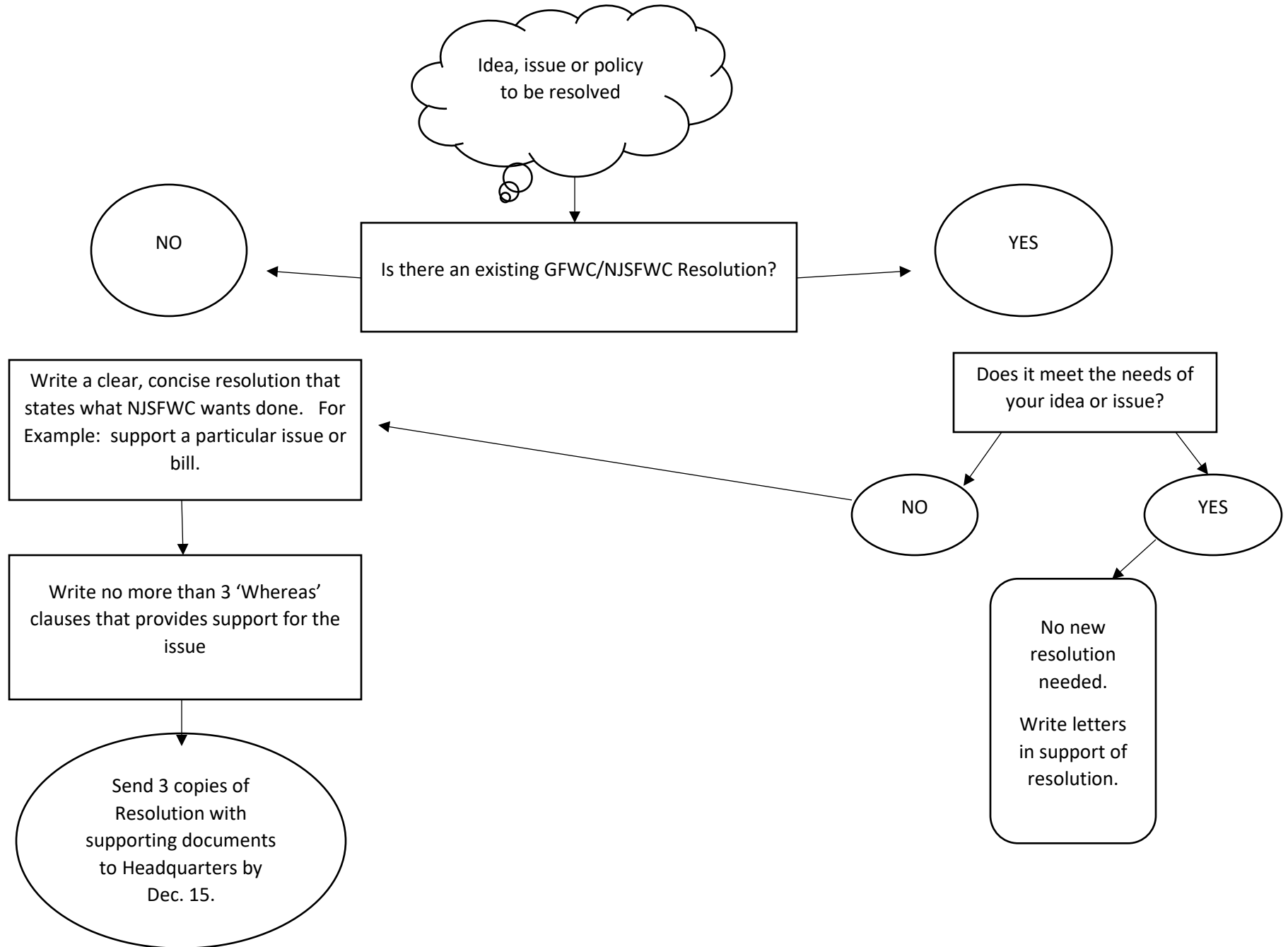
For special events with or without alcohol a separate "one day event" policy can be written. Examples include Tricky Trays, Fashion Shows etc. All clubs are encouraged to call RLM Agency to discuss events and possible charges.

This policy does not cover individual members for injury. Members of clubs are considered insureds under the policy and therefore are not covered. The insurance protects the club as a whole. As an insured under the policy a member is not able to claim an injury sustained at an event sponsored by the club. However, a non-member attending an event that is injured due to the club's negligence would be afforded coverage under the Federation Policy.

Currently there are 129 NJ Women's Clubs protected under the Federation policy through RLM Agency. The annual renewal date is November 1st. Clubs can be added and removed as needed.

Several Women's Clubs have inquired about Directors & Officers Insurance. This is a separate policy which would protect the officers from being personally liable in the performance of their duties. Any club interested in this type of coverage is encouraged to contact RLM Agency Inc. for more information.

HOW TO WRITE A RESOLUTION



THE 1894 SOCIETY



We need you to join the team!

NEW JERSEY STATE FEDERATION OF WOMEN'S CLUBS OF GFWC

JOIN THE 1894 SOCIETY 2020-2021 MEMBERSHIP DUE

*Keep the Dream Alive,
Join Today!*

Did you know:

- The NJSFWC Headquarters Building, built with trading stamps, is located on land leased from Rutgers University.
- The Federation's lease with Rutgers sets the rental amount at a percentage of the value of the land.
- *The value of land has increased.*

Why the 1894 Society?

- The 1894 Society was initiated in 2002 in an effort to build a fund that will enable the NJSFWC to meet any increase that may be assessed by Rutgers.

1894 Society Membership Form (Memberships can be in the name of individuals or clubs!)

Please enroll me/our club in the 1894 Society for the 2020-2021 club year (April 1, 2020-March 31, 2021).

_____ \$18.94 _____ \$189.40 _____ \$1,894.00 _____ Other \$ _____

Name of Individual _____ District _____
(IF INDIVIDUAL DONATION, PLEASE NOTE CLUB YOU BELONG TO BUT DO NOT CHECK BOX NEXT TO CLUB NAME)

Club Name _____ District _____

Address _____

Telephone Number _____ Email* _____

Make checks payable to **"NJSFWC"**, earmarked **"1894 Society"**. Mail check and donation form to: NJSFWC Headquarters, 55 Labor Center Way, New Brunswick, NJ 08901

* All email addresses will automatically be added to the NJSFWC eConnection distribution list. The NJSFWC eConnection brings current Federation news to your email box.